

High Frequency Ceramic Solutions

6.6 GHz Extended WiFi Band Band Pass Filter, 4.5x3.2x2.2mm

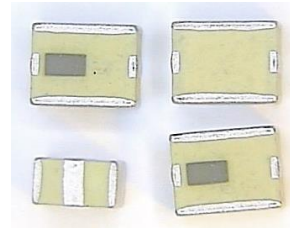
P/N 6613BP44A1025

Detail Specification: 10/14/2019

Page 1 of 4

General Specifications

Part Number	6613BP44A1025
Operational Frequency (MHz)	6100 - 7125
Insertion Loss (dB)	2.4 typ. (2.8 max.)
Return Loss (dB)	9.5 max.



Want the mechanical model or layout file? Send us a message at: <https://www.johansontechnology.com/ask-a-question>

Attenuation (dB)			
30 - 1700 MHz	35 min.	Ripple @BW (dB) 2.2 max. Power Capacity 3W max. (CW) Operating Temperature -40 to +85°C Storage Temperature -40 to +85°C Recommended Storage Conditions and Period for unused T&R Product +5 to +35°C Humidity 45-75%RH 18 months max. Reel Quantity 1,000	
1980 - 2370 MHz	35 min.		
2400 - 2500 MHz	35 min.		
3960 - 4740 MHz	33 min.		
4750 - 5150 MHz	35 min.		
5170 - 5815 MHz	50 min.		
5815 - 5825 MHz	45 min.		
5825 - 5850 MHz	30 min.		
5900 - 5925 MHz	15 min.		
7925 - 8250 MHz	3 min.		
8250 - 9440 MHz	6 min.		
11890 - 14210 MHz	30 min.		
17385 - 21315 MHz	10 min.		

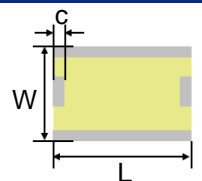
You can download measured s-parameters of this component at: <https://www.johansontechnology.com/band-pass-filters>

Part Number Explanation

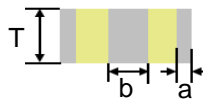
P/N Suffix	Packaging Style	Bulk	Suffix = S	E.g. 6613BP44A1025S
		T & R	Suffix = E	E.g. 6613BP44A1025E
	Evaluation Board	50Ω SMA	Suffix = EB1SMA	E.g. 6613BP44A1025-EB1SMA

Mechanical Dimensions

	In	mm
L	0.177 ± 0.008	4.50 ± 0.20
W	0.126 ± 0.008	3.20 ± 0.20
T	0.087 max.	2.20 max.
a	0.016 ± 0.008	0.40 ± 0.20
b	0.031 ± 0.008	0.80 ± 0.20
c	0.012 ± 0.006	0.30 ± 0.15



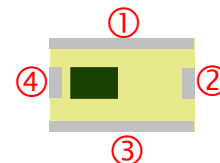
(Bottom View)



(Side View)

Terminal Configuration

No.	Function
1	GND
2	INPUT / OUTPUT
3	GND
4	INPUT / OUTPUT



(Top View)

Johanson Technology, Inc. reserves the right to make design changes without notice.

All sales are subject to Johanson Technology, Inc. terms and conditions.



<https://www.johansontechnology.com>

4001 Calle Tecate • Camarillo, CA 93012 • TEL 805.389.1166 FAX 805.389.1821

Ver. 1.0

2019 Johanson Technology, Inc. All Rights Reserved

High Frequency Ceramic Solutions

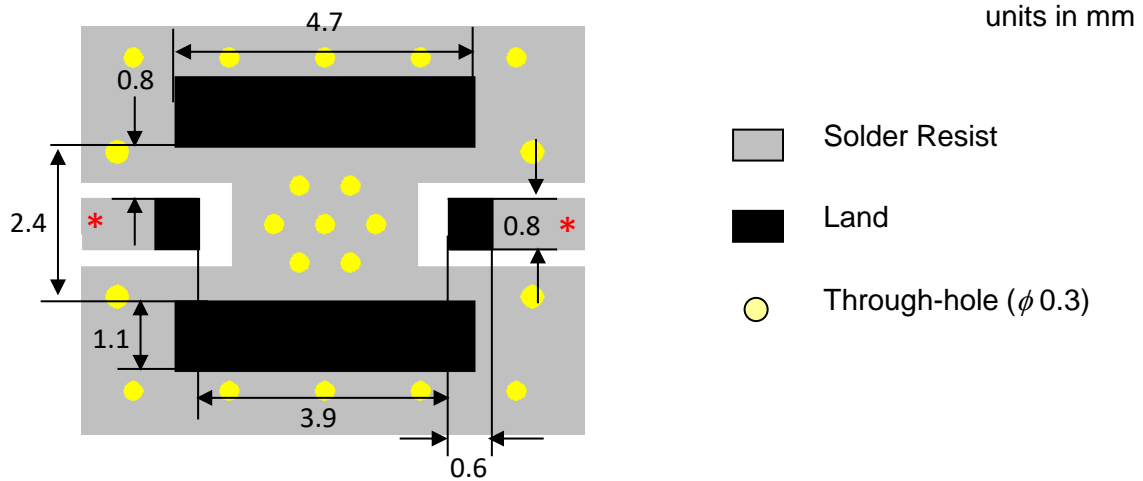
6.6 GHz Extended WiFi Band Band Pass Filter, 4.5x3.2x2.2mm

P/N 6613BP44A1025

Detail Specification: 10/14/2019

Page 2 of 4

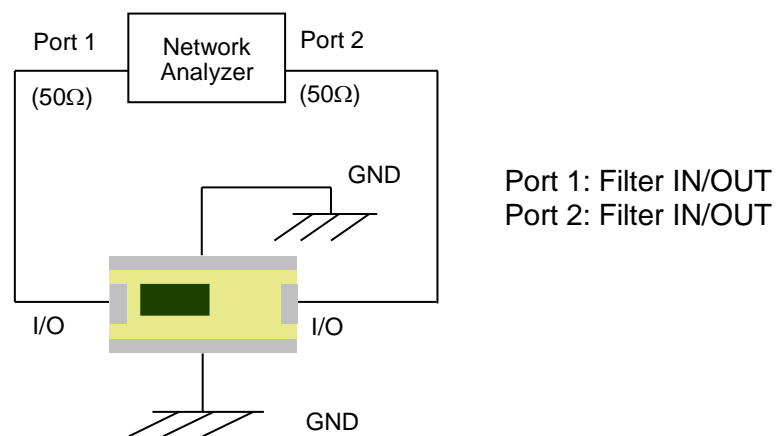
Mounting Pad Dimensions



*Transmission line width should be designed to match 50 Ω characteristic impedance, depending on PCB material and thickness.

Would you like the layout? Send us a message at: <https://www.johansontechnology.com/ask-a-question>

Measurement Schematic



Johanson Technology, Inc. reserves the right to make design changes without notice.

All sales are subject to Johanson Technology, Inc. terms and conditions.



<https://www.johansontechnology.com>

4001 Calle Tecate • Camarillo, CA 93012 • TEL 805.389.1166 FAX 805.389.1821

Ver. 1.0

2019 Johanson Technology, Inc. All Rights Reserved

High Frequency Ceramic Solutions

6.6 GHz Extended WiFi Band Band Pass Filter, 4.5x3.2x2.2mm

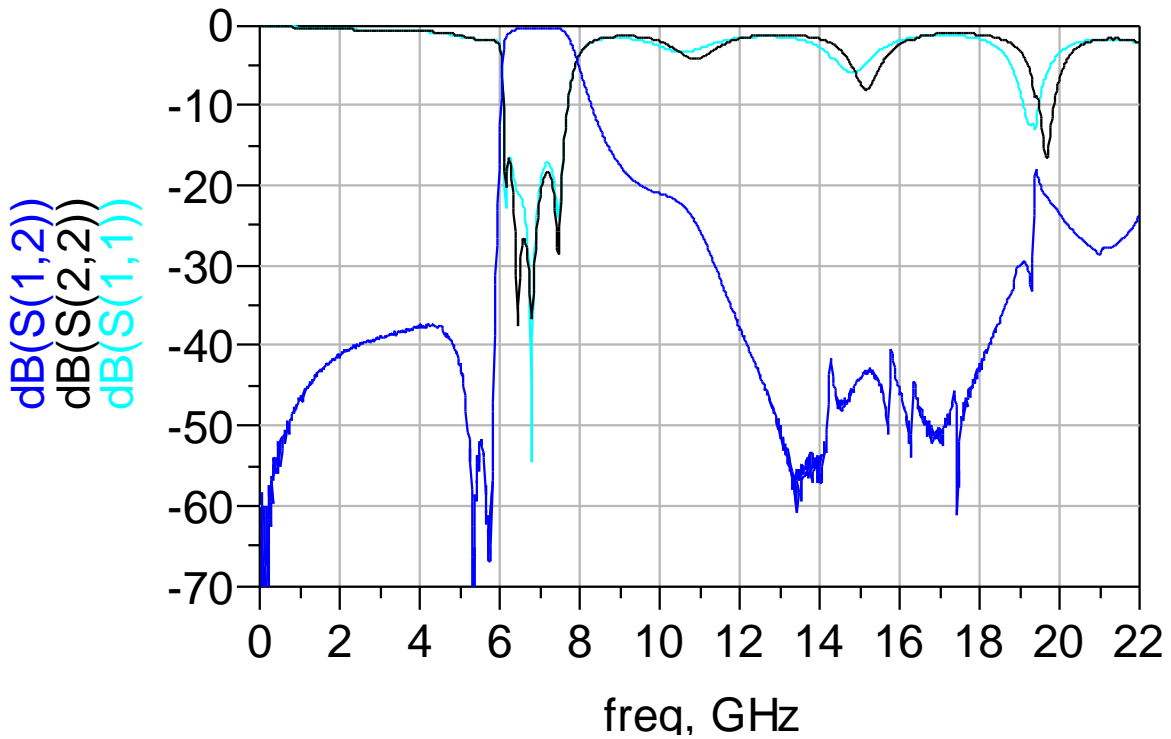
P/N 6613BP44A1025

Detail Specification: 10/14/2019

Page 3 of 4

Typical Electrical Characteristics (T=25°C)

Insertion Loss & Return loss



Do you need the S-parameter file of the above? Send us a message at:

<https://www.johansontechnology.com/ask-a-question>

Johanson Technology, Inc. reserves the right to make design changes without notice.

All sales are subject to Johanson Technology, Inc. terms and conditions.



<https://www.johansontechnology.com>

4001 Calle Tecate • Camarillo, CA 93012 • TEL 805.389.1166 FAX 805.389.1821

Ver. 1.0

2019 Johanson Technology, Inc. All Rights Reserved

High Frequency Ceramic Solutions

6.6 GHz Extended WiFi Band Band Pass Filter, 4.5x3.2x2.2mm

P/N 6613BP44A1025

Detail Specification: 10/14/2019

Page 4 of 4

More BPF info such as measured s-parameters and ordering details at:

<https://www.johansontechnology.com/band-pass-filter>

UWB mini embedded Antennas

<https://www.johansontechnology.com/antennas>

Soldering Information

<https://www.johansontechnology.com/ipcsoldering-profile>

MSL Info

<https://www.johansontechnology.com/msl-rating>

Recommended Storage Condition and Max Shelf Life

<https://www.johansontechnology.com/recommended-storage-conditions>

RoHS Compliance

<https://www.johansontechnology.com/rohs-compliance>

Layout review services

<https://www.johansontechnology.com/ask-a-question>

Antenna layout review, tuning, and characterization services

<https://www.johansontechnology.com/ipc-antenna-services>

Packaging information

<https://www.johansontechnology.com/tape-reel-packaging>

Johanson Technology, Inc. reserves the right to make design changes without notice.

All sales are subject to Johanson Technology, Inc. terms and conditions.



<https://www.johansontechnology.com>

4001 Calle Tecate • Camarillo, CA 93012 • TEL 805.389.1166 FAX 805.389.1821

Ver. 1.0

2019 Johanson Technology, Inc. All Rights Reserved