

ATZB-S1-256-3-0-C

ZigBit PCB

Specification

Table of Contents

1	GENERAL INFORMATION.....	3
1.1	Board identification.....	3
2	PCB SPECIFICATION	3
2.1	Manufacturing data	3
2.2	Layer stackup	4
2.3	Gerber files.....	4
2.4	Via – Tenting.....	5
2.5	Placement of fabrication ID mark	5
3	PANELIZING.....	5
4	IMPEDANCE CHECK	5

1 General information

1.1 Board identification

Name: ATZB-S1-256-3-0-C PCB

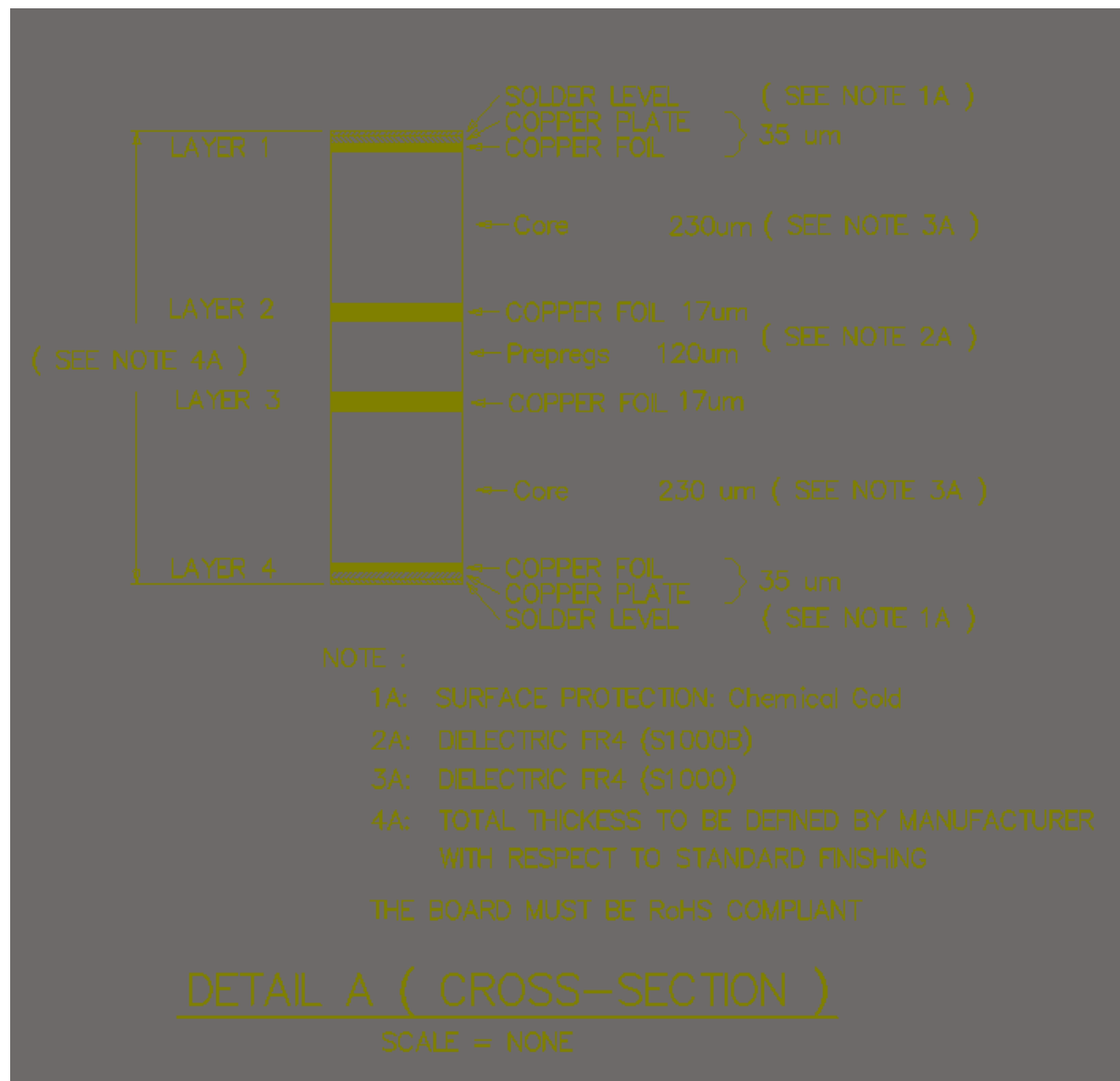
Board identification number: A08-1569 Rev5

2 PCB specification

2.1 Manufacturing data

- Size: 30 mm x 20 mm
- PCB material: FR-4(S1000 and S1000B) –Refer Detailed Stack Up
- Layers: 4
- Finish: ENIG
- Minimum hole size: 0.2 mm
- Minimum pad size: 0.6 mm
- Minimum track width: 0.152mm
- Minimum spacing: 0.15 mm
- Solder mask color: Black
- Silk-screen color: White
- Impedance controlled PCB

2.2 Layer stackup



2.3 Gerber files

Gerber File Description

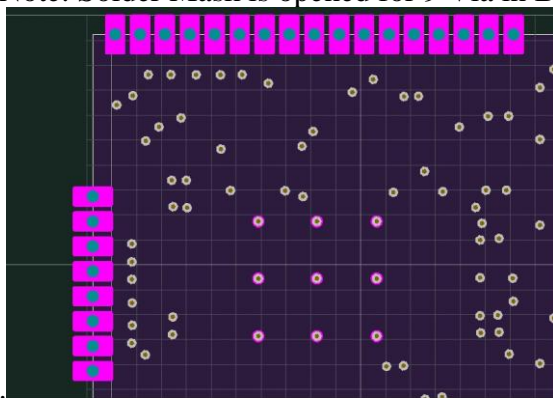
File name	Description
A08-1569_Rev5.GTL	Gerber file for Top layer –L1
A08-1569_Rev5.G1	Gerber file for Gnd layer –L2
A08-1569_Rev5.G2	Gerber file for Power layer –L3
A08-1569_Rev5.GBL	Gerber file for Bottom signal layer –L4
A08-1569_Rev5.GTS	Gerber file for Top Solder Mask
A08-1569_Rev5.GBS	Gerber file for Bottom Solder Mask
A08-1569_Rev5.GTO	Gerber file for Top Over Lay(Silk Screen)
A08-1569_Rev5.GBO	Gerber file for Bottom Overlay (Silk Screen)

A08-1569_Rev5.GTP	Gerber file for Top Paste
A08-1569_Rev5.GM1	Gerber file for Board outline
A08-1569_Rev5.DRR	Drill file report
A08-1569_Rev5.TXT	Drill file
A08-1569_Rev5.DRL	Drill file

2.4 Via – Tenting

All plated through holes with solder mask covered area need to be Tented on both side of the PCB.

Note: Solder Mask is opened for 9 Via in Bottom solder mask



2.5 Placement of fabrication ID mark

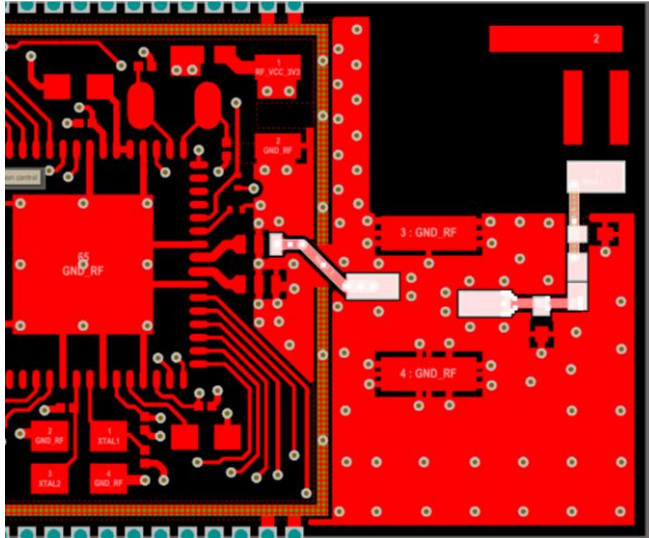
The fabrication ID mark should be placed on the bottom side.

3 Panelizing

When making panels for this board the following issues should be considered.

- Fiducial marks should be placed on the panel.

4 Impedance Check



Highlighted Track need to confirm 50 Ohm impedance at 2.4GHz.