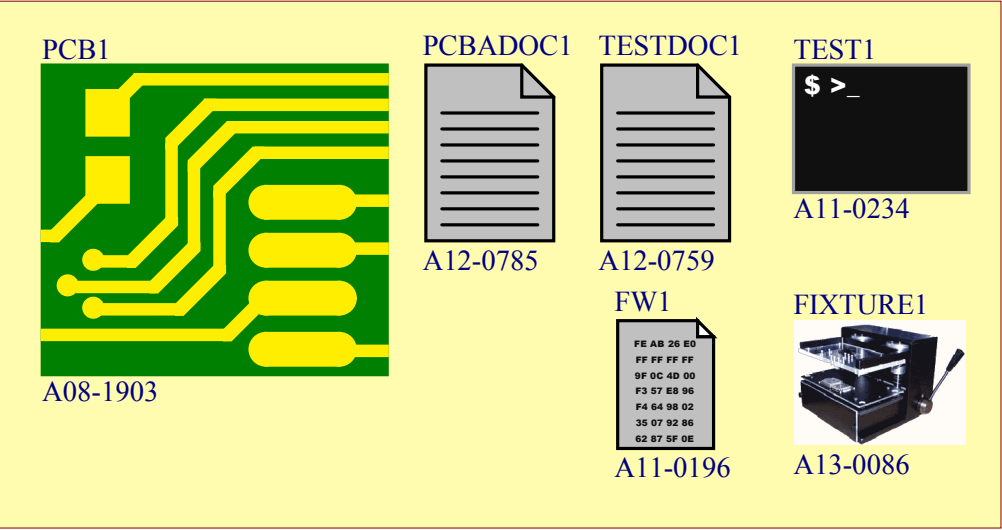

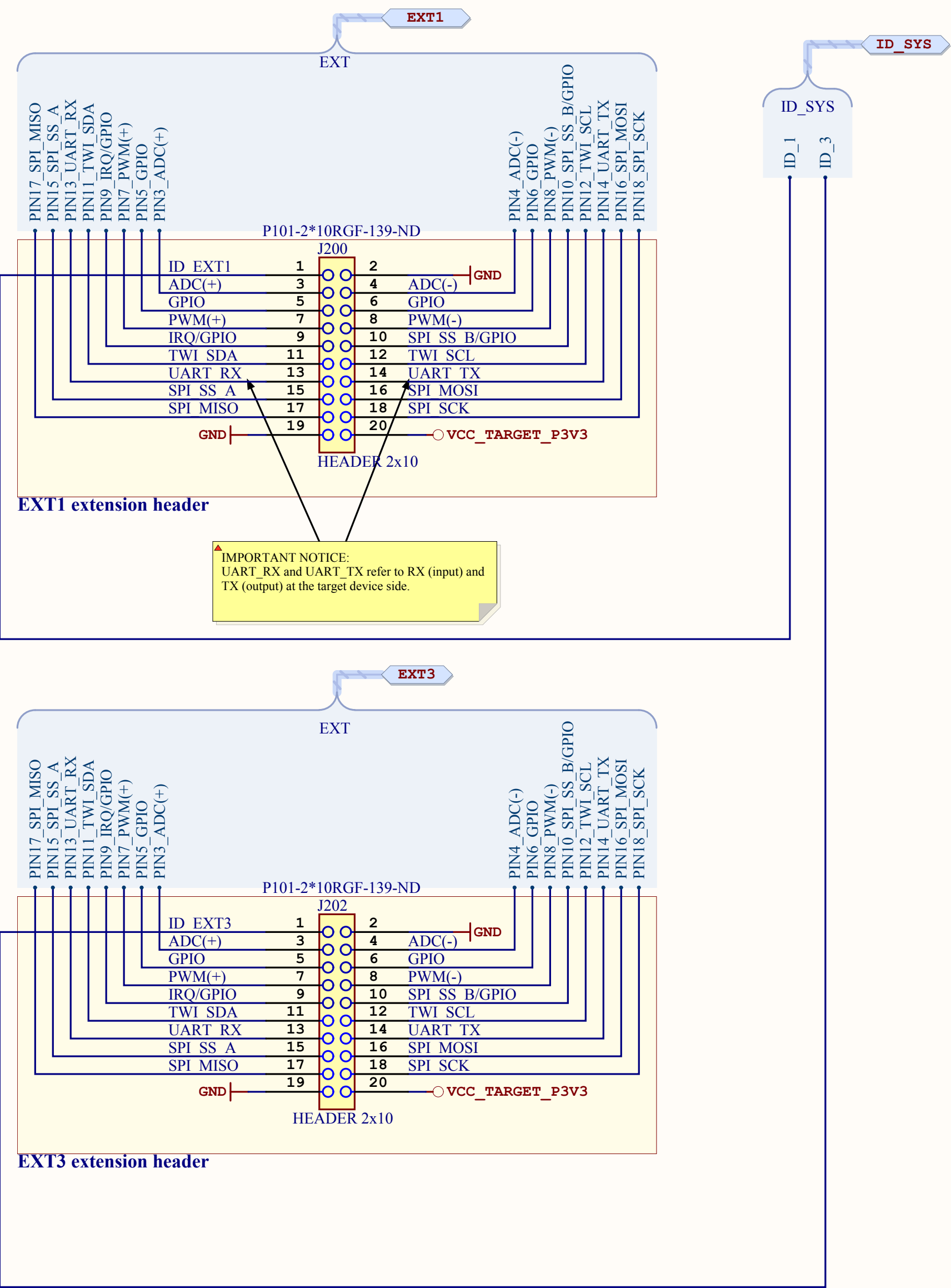
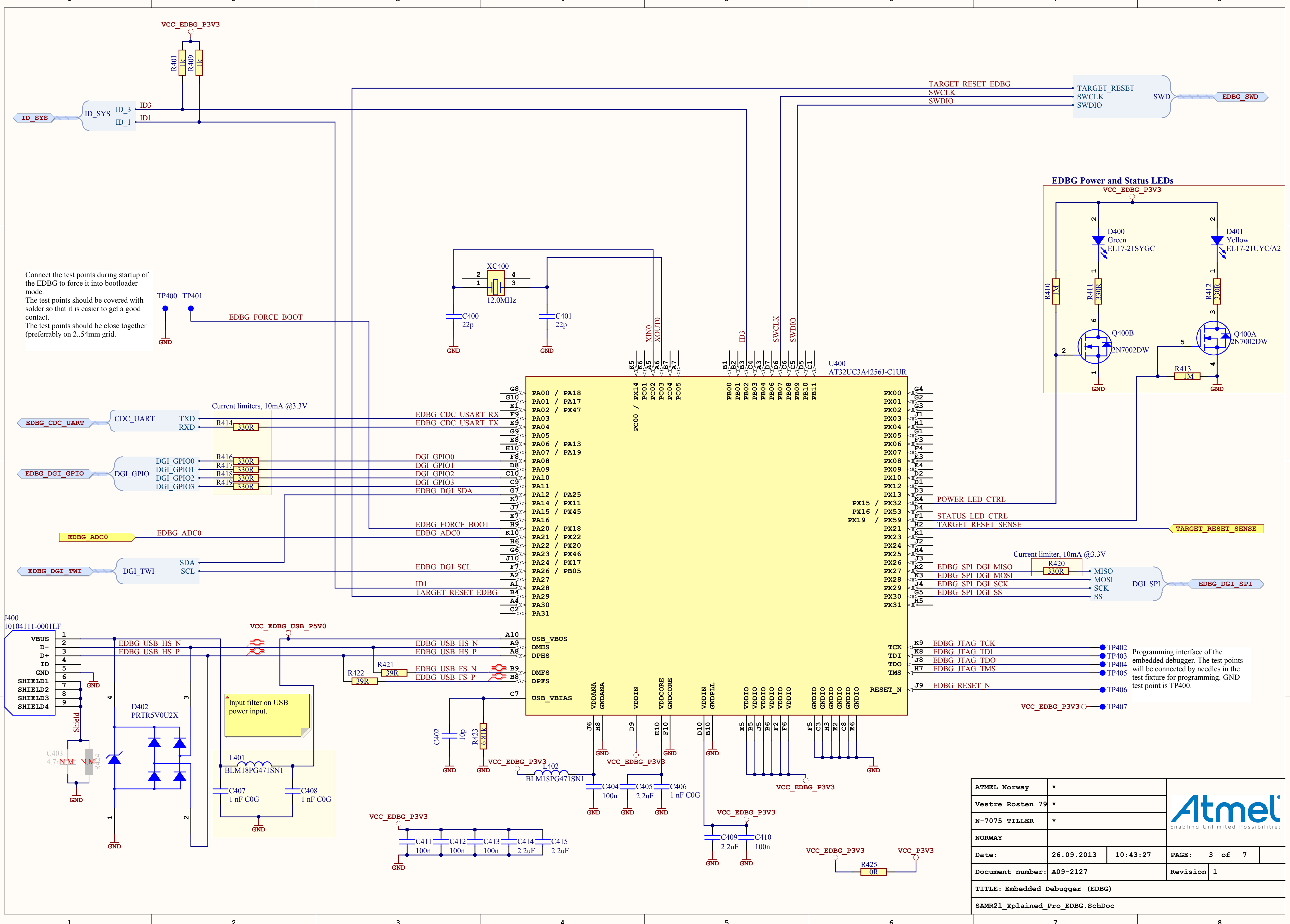


Label PCBA with MAC64 and FCC ID

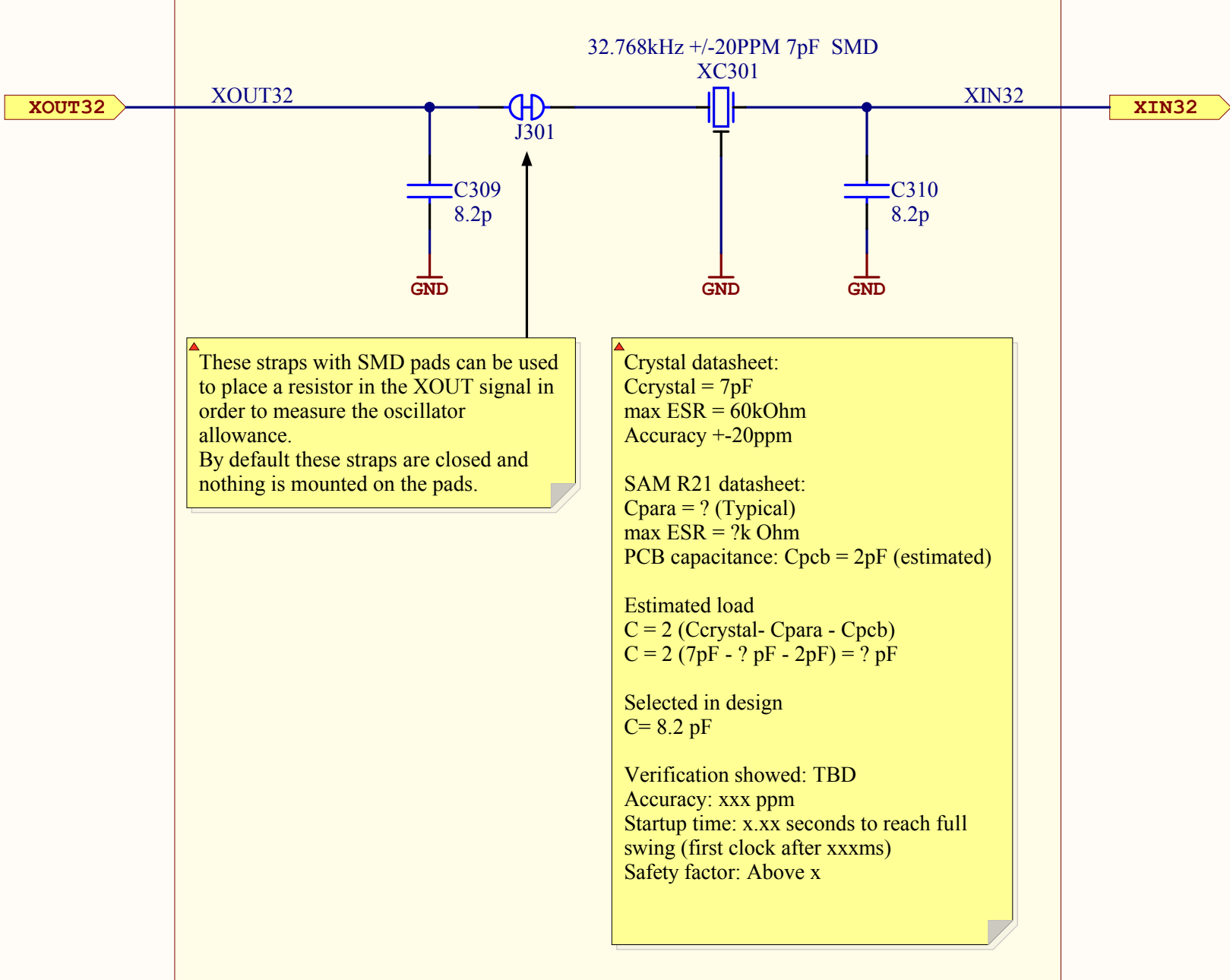


ATMEL Norway		*	 Enabling Unlimited Possibilities		
Vestre Rosten 79		*			
N-7075 TILLER		*			
NORWAY					
Date:	26.09.2013	10:43:26	PAGE:	1 of 7	
Document number:	A09-2127		Revision	1	
TITLE: Top Level Schematics					
SAMR21_Xplained_Pro_TopLevel.SchDoc					

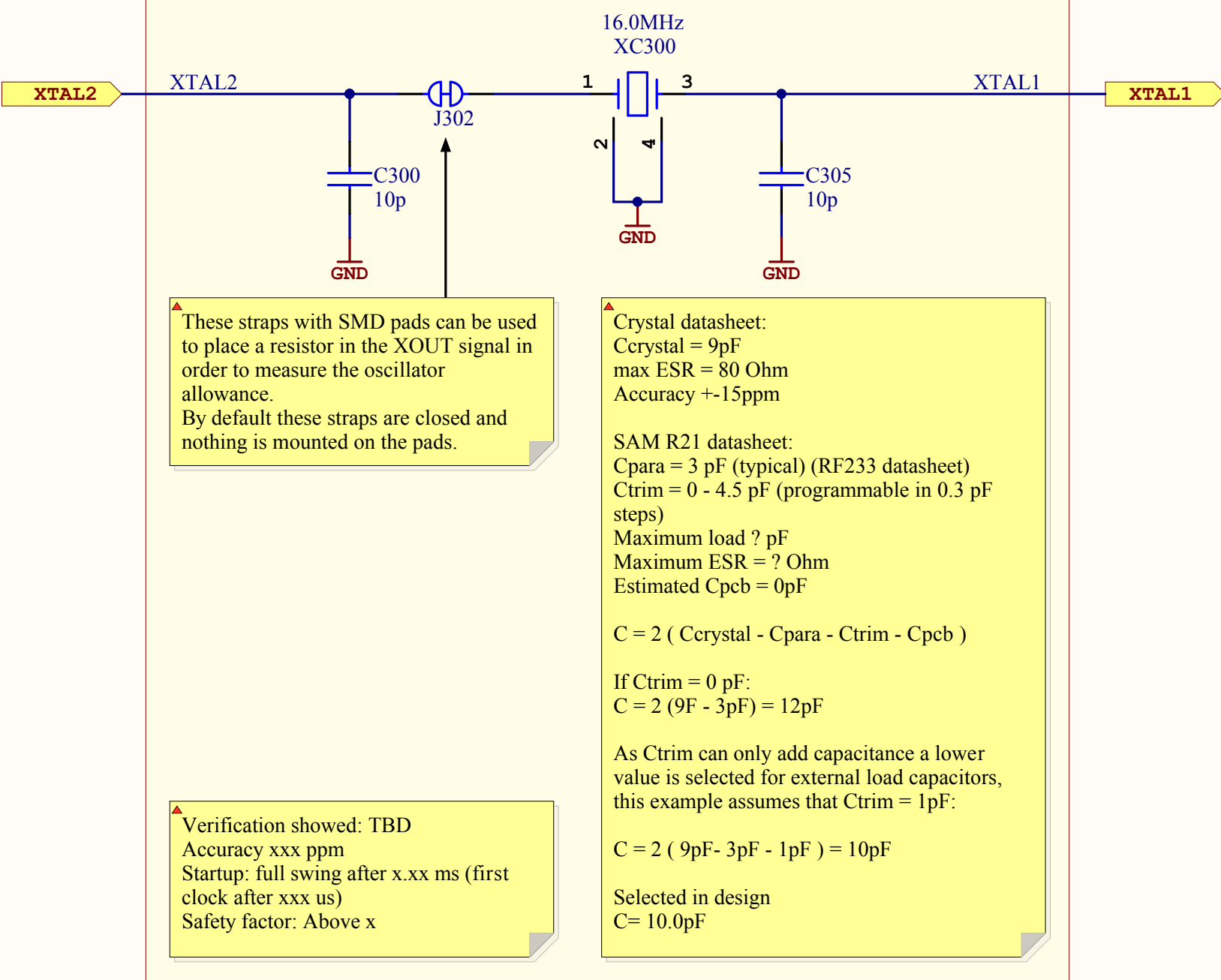




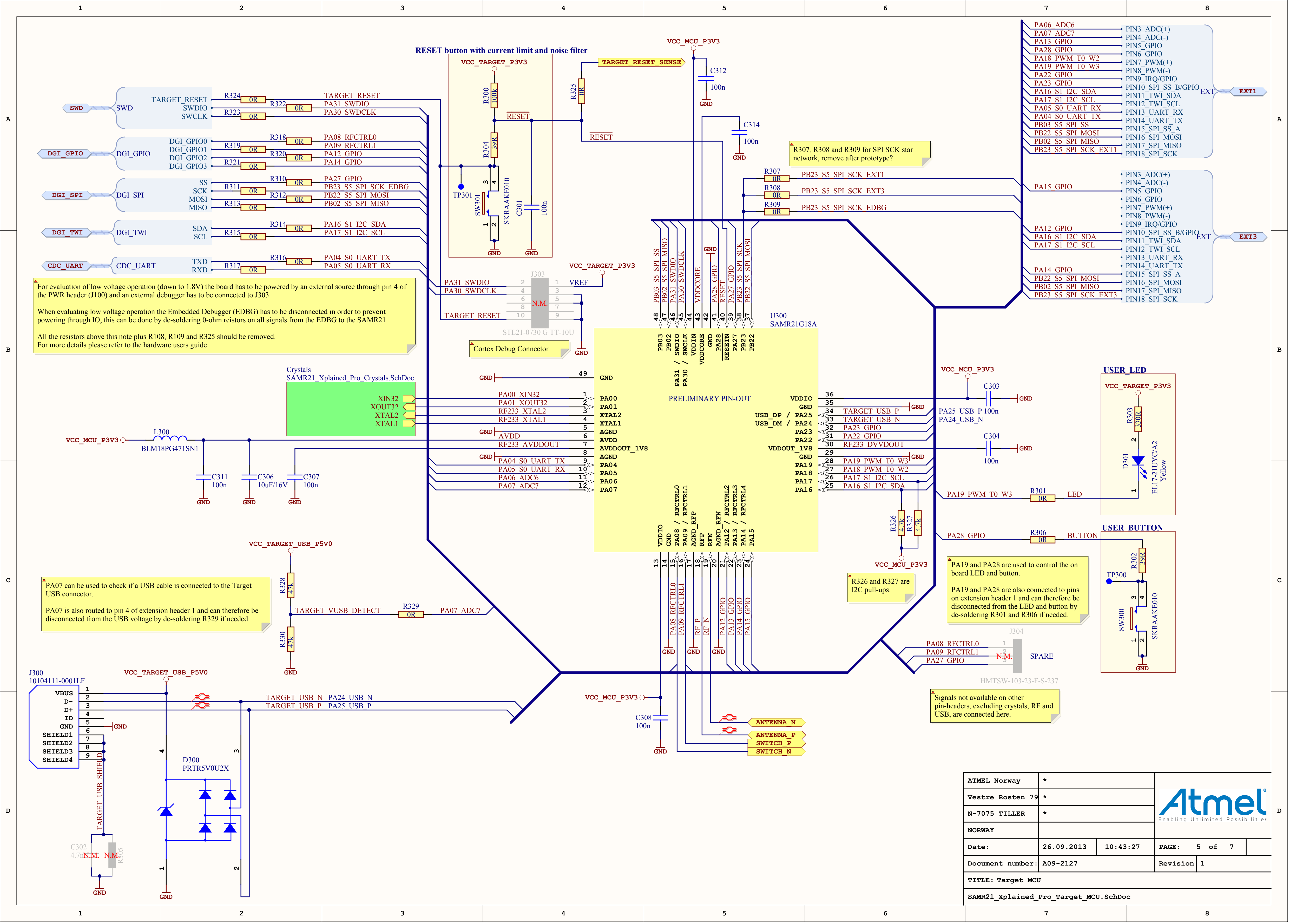
32 kHz Crystal

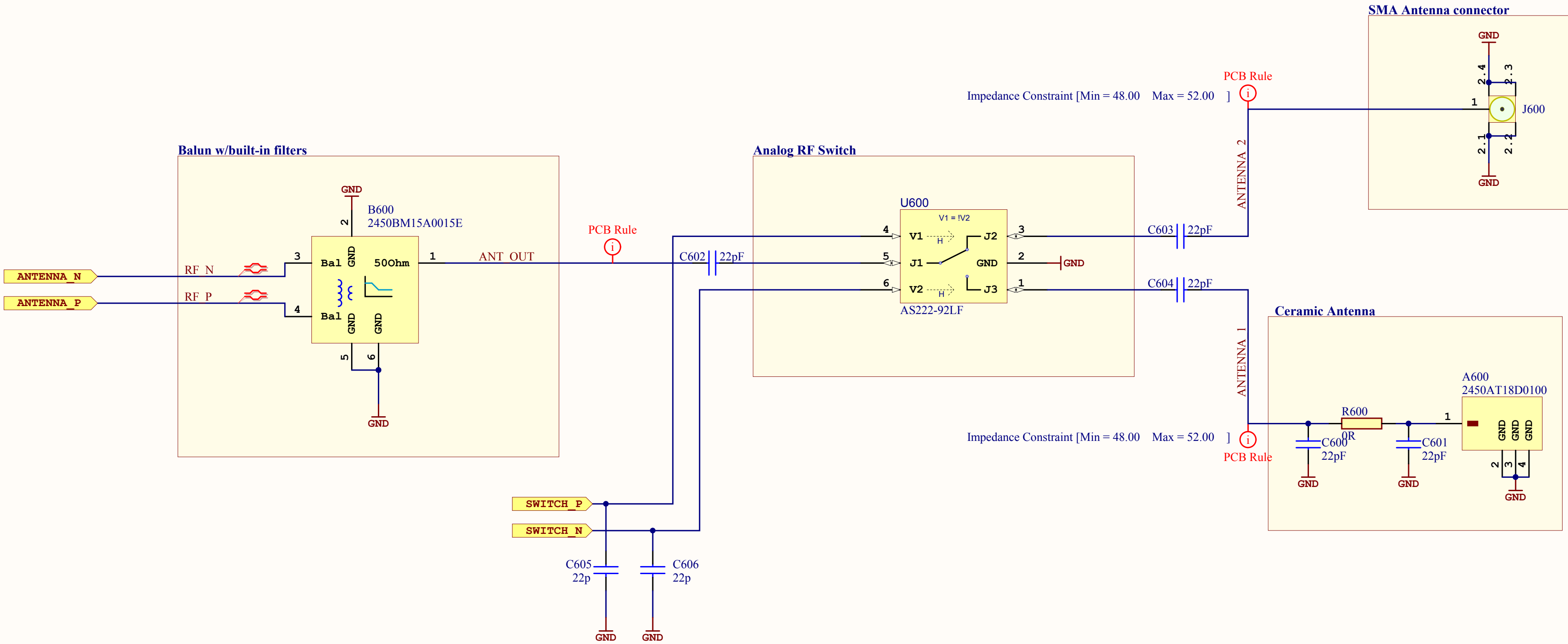


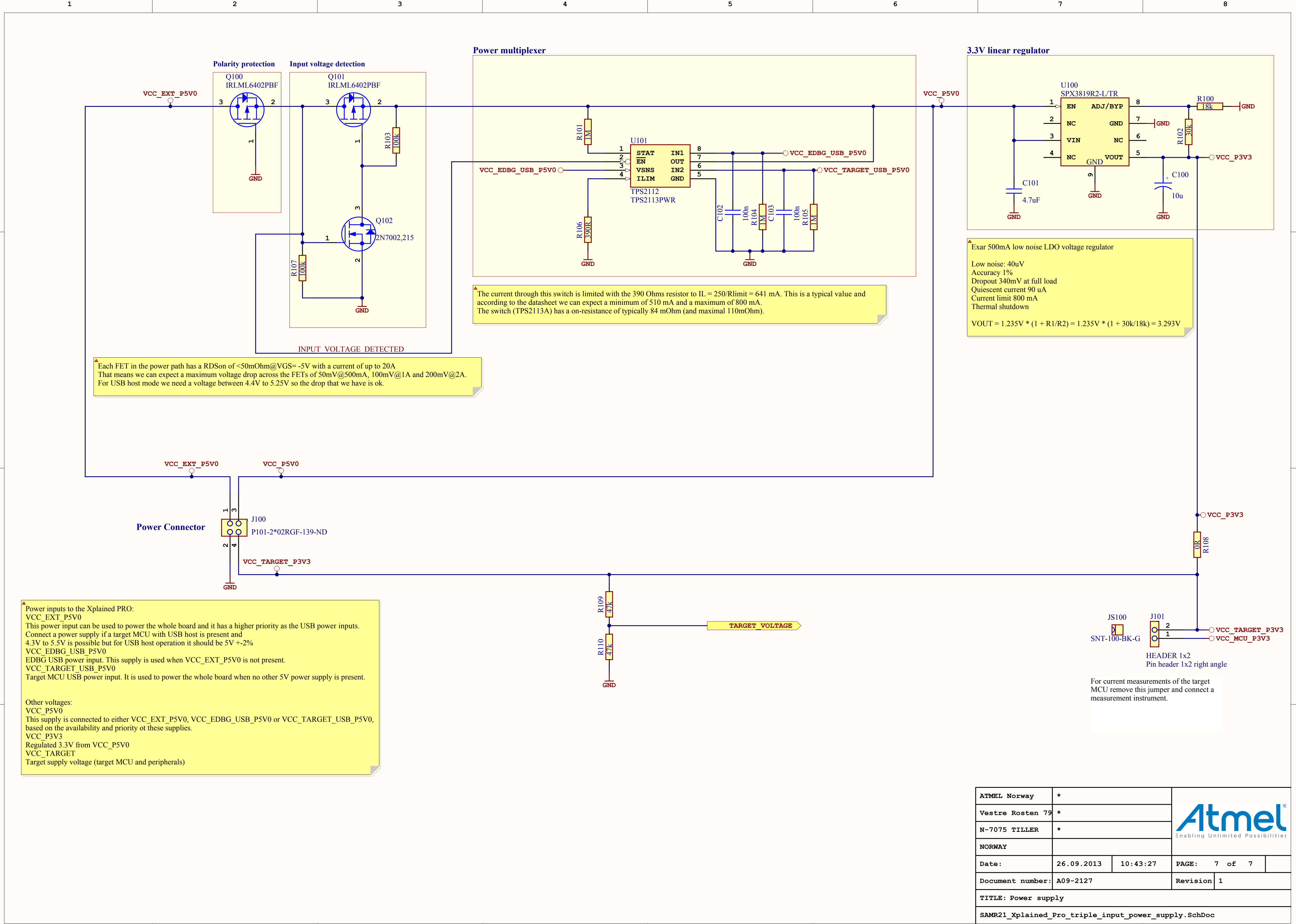
16 MHz Crystal











Each FET in the power path has a  $R_{DSon}$  of  $<50m\Omega$  @  $V_{GS} = -5V$  with a current of up to 20A. That means we can expect a maximum voltage drop across the FETs of  $50mV @ 500mA$ ,  $100mV @ 1A$  and  $200mV @ 2A$ . For USB host mode we need a voltage between 4.4V to 5.25V so the drop that we have is ok.

The current through this switch is limited with the 390 Ohms resistor to  $I_L = 250/R_{limit} = 641\text{ mA}$ . This is a typical value and according to the datasheet we can expect a minimum of 510 mA and a maximum of 800 mA. The switch (TPS2113A) has a on-resistance of typically 84 mOhm (and maximal 110mOhm).

Exar 500mA low noise LDO voltage regulator

Low noise: 40uV  
Accuracy 1%  
Dropout 340mV at full load  
Quiescent current 90 uA  
Current limit 800 mA  
Thermal shutdown

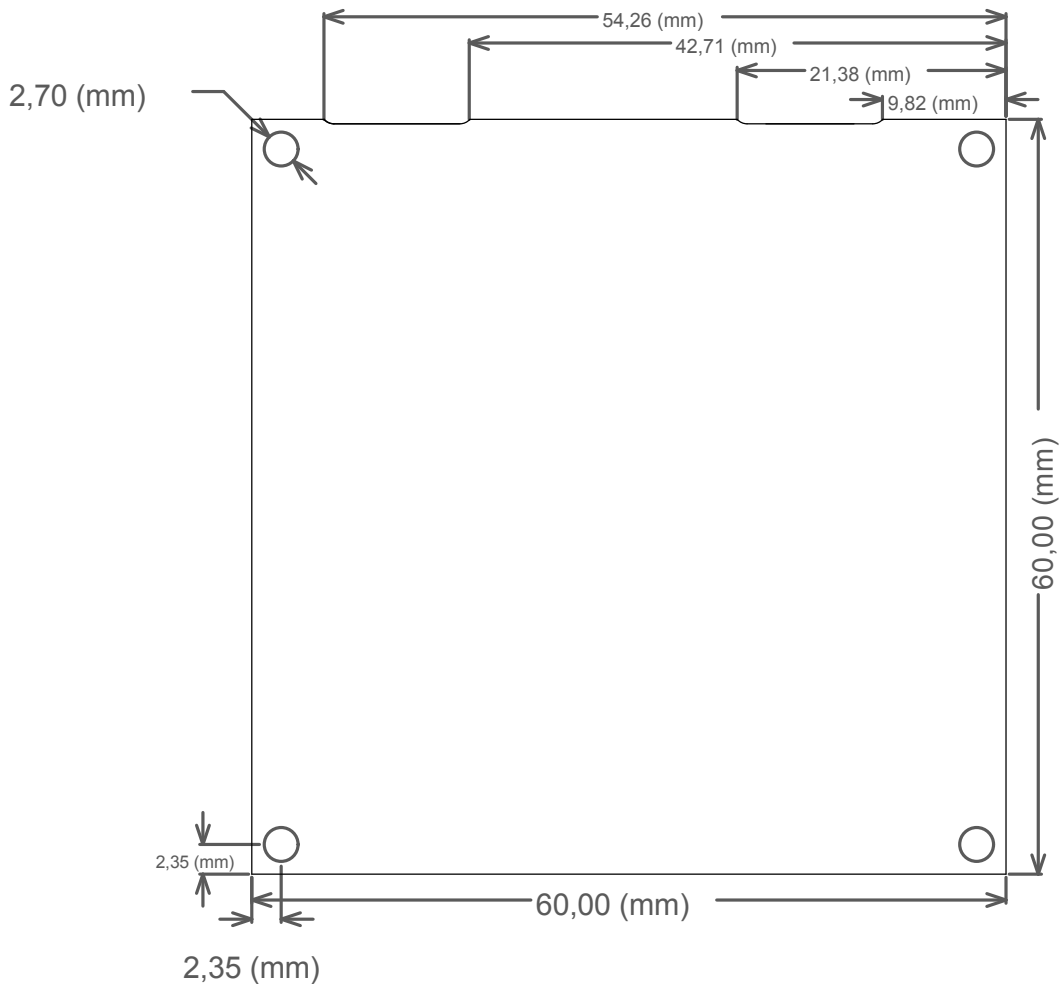
$V_{OUT} = 1.235V * (1 + R1/R2) = 1.235V * (1 + 30k/18k) = 3.293V$

Power inputs to the Xplained PRO:  
VCC\_EXT\_P5V0  
This power input can be used to power the whole board and it has a higher priority as the USB power inputs. Connect a power supply if a target MCU with USB host is present and 4.3V to 5.5V is possible but for USB host operation it should be 5V  $\pm 2\%$   
VCC\_EDBG\_USB\_P5V0  
EDBG USB power input. This supply is used when VCC\_EXT\_P5V0 is not present.  
VCC\_TARGET\_USB\_P5V0  
Target MCU USB power input. It is used to power the whole board when no other 5V power supply is present.

Other voltages:  
VCC\_P5V0  
This supply is connected to either VCC\_EXT\_P5V0, VCC\_EDBG\_USB\_P5V0 or VCC\_TARGET\_USB\_P5V0, based on the availability and priority of these supplies.  
VCC\_P3V3  
Regulated 3.3V from VCC\_P5V0  
VCC\_TARGET  
Target supply voltage (target MCU and peripherals)

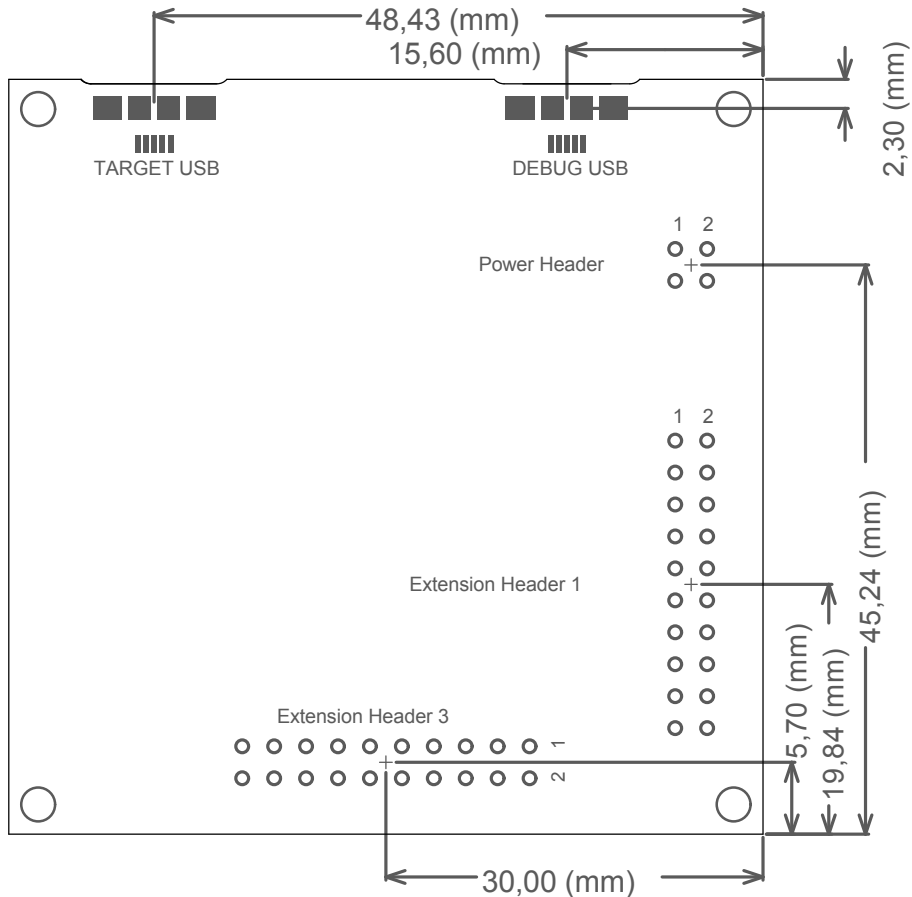
For current measurements of the target MCU remove this jumper and connect a measurement instrument.

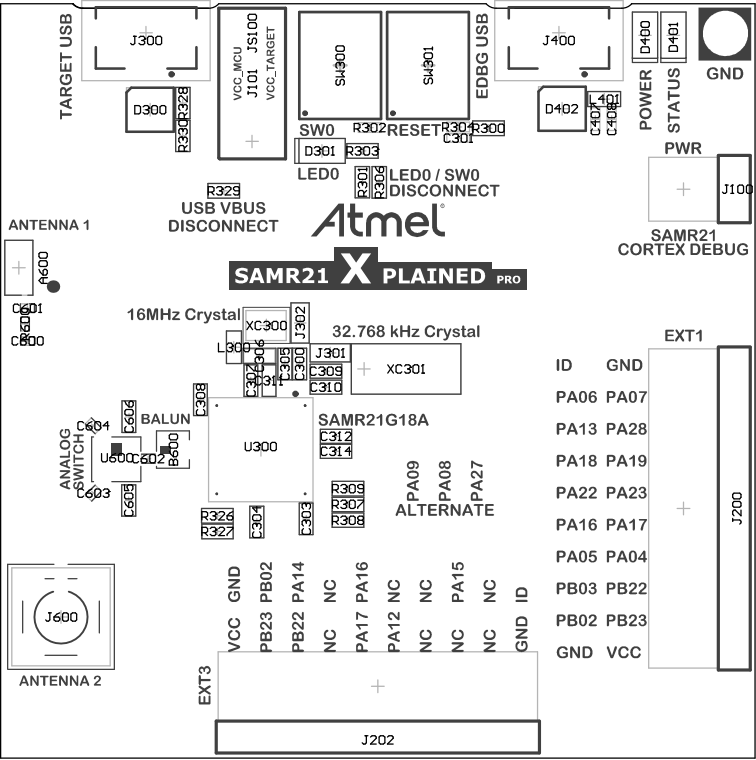
# Small MCU Mechanical Dimensions

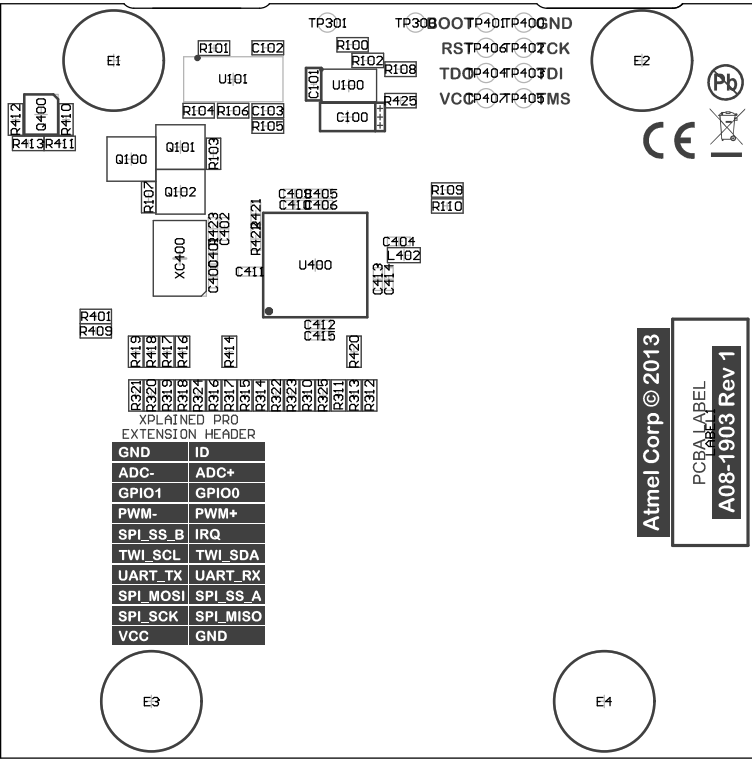




# Small MCU Connector Placement







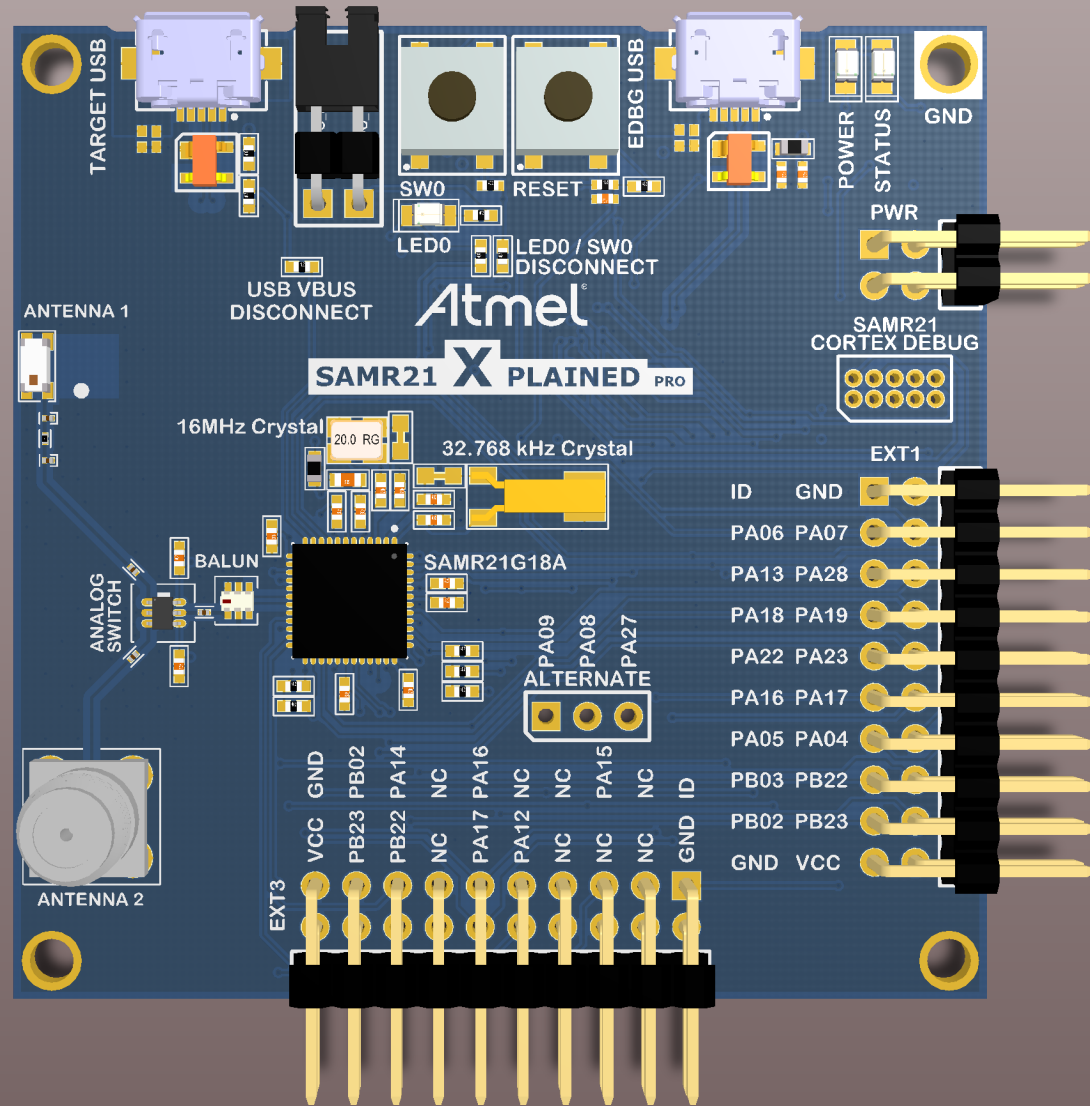
EXPLAINED PRO  
EXTENSION HEADER

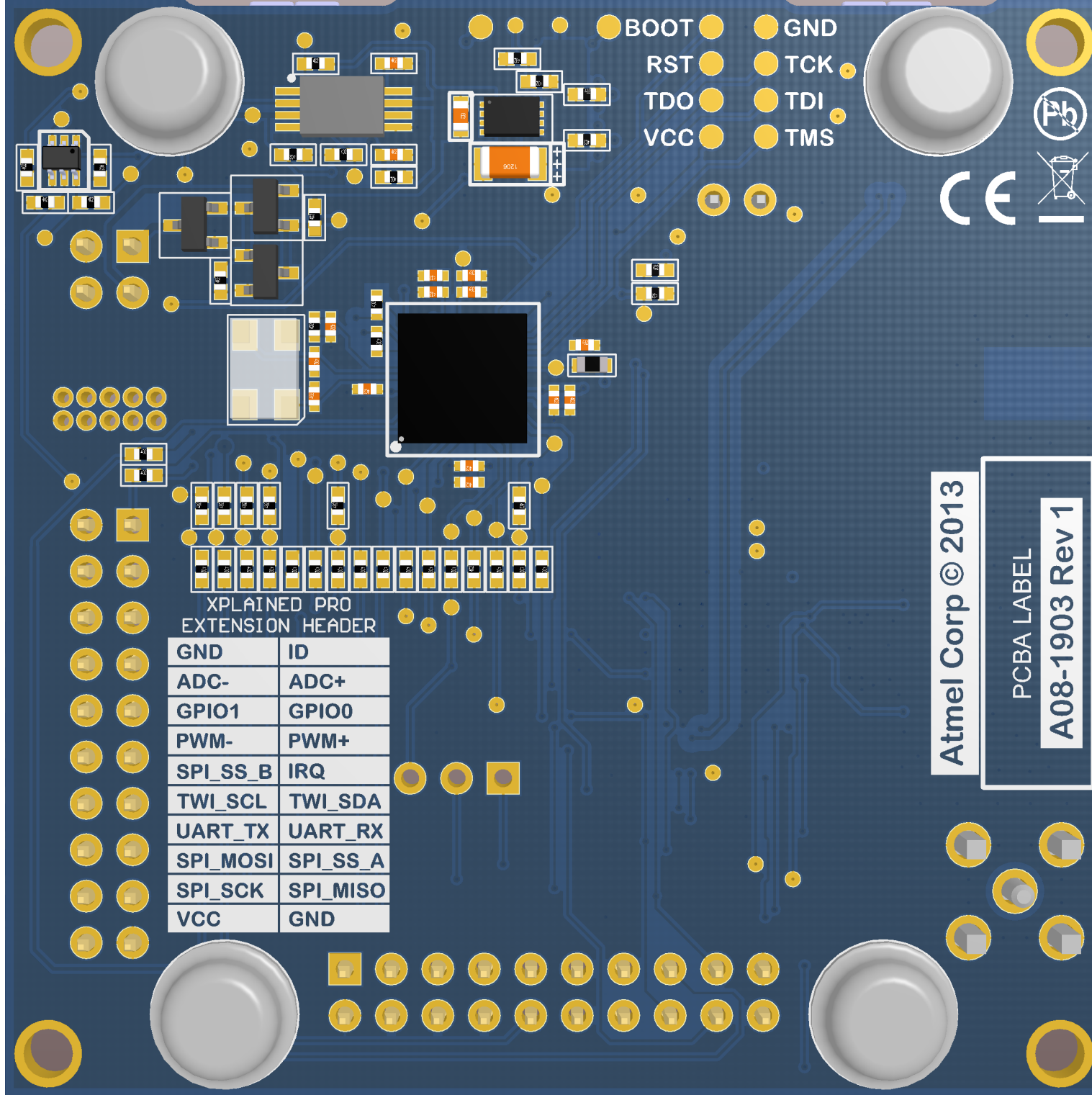
GND	ID
ADC-	ADC+
GPIO1	GPIO0
PWM-	PWM+
SPI_SS_B	IRQ
TWI_SCL	TWI_SDA
UART_TX	UART_RX
SPI_MOSI	SPI_SS_A
SPI_SCK	SPI_MISO
VCC	GND

Atmel Corp © 2013

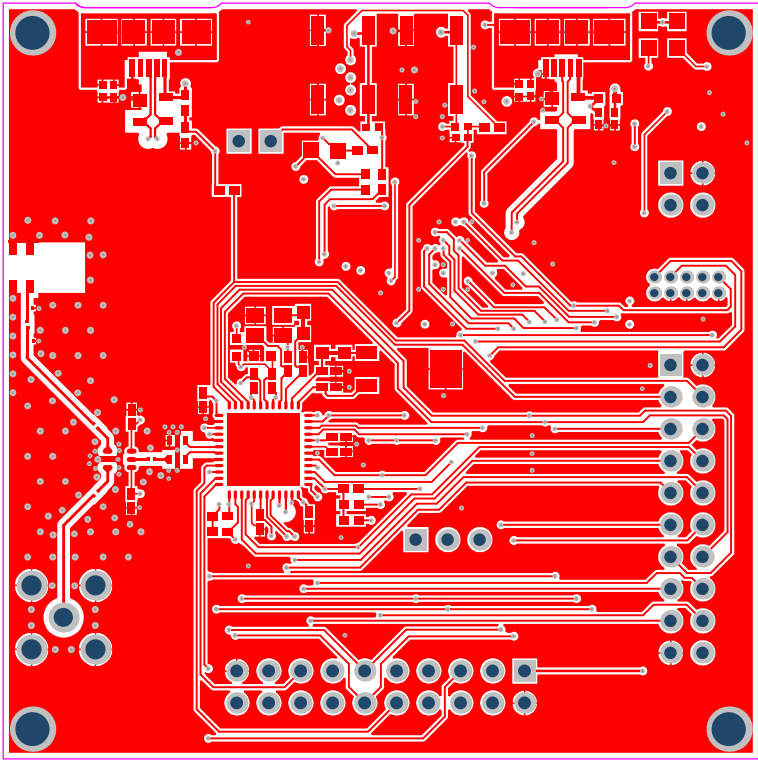
PCBA LABEL

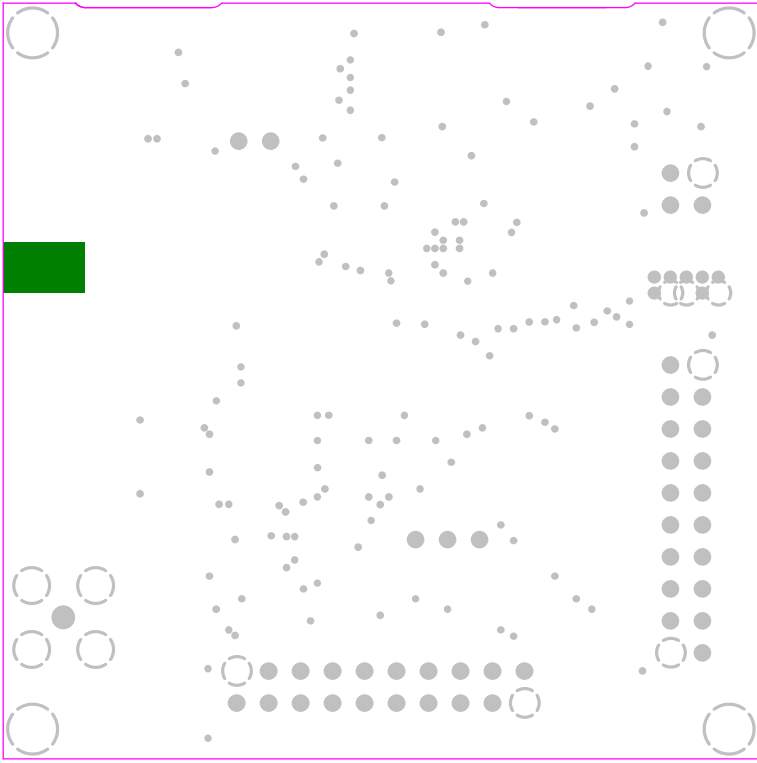
A08-1903 Rev 1

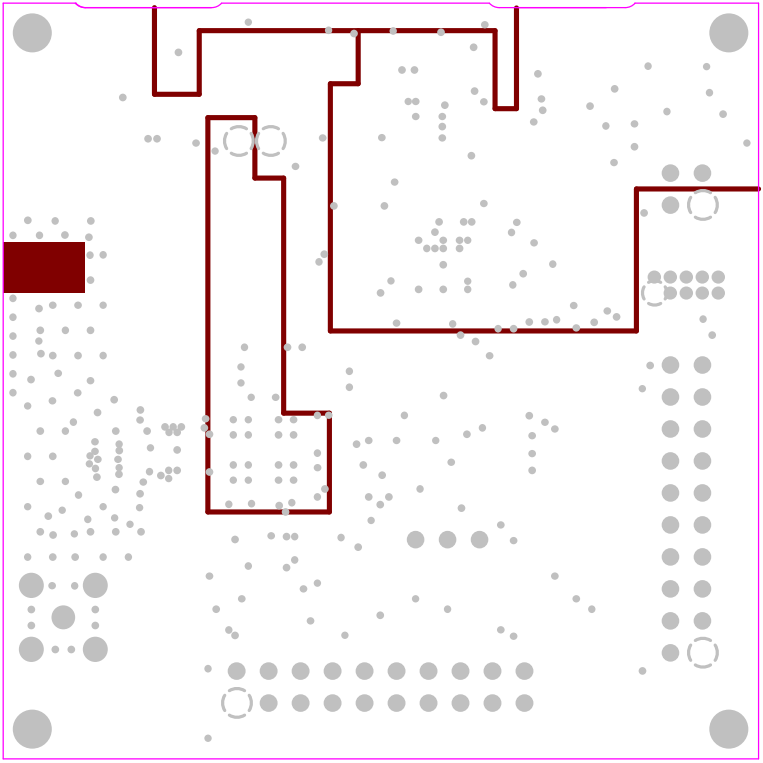


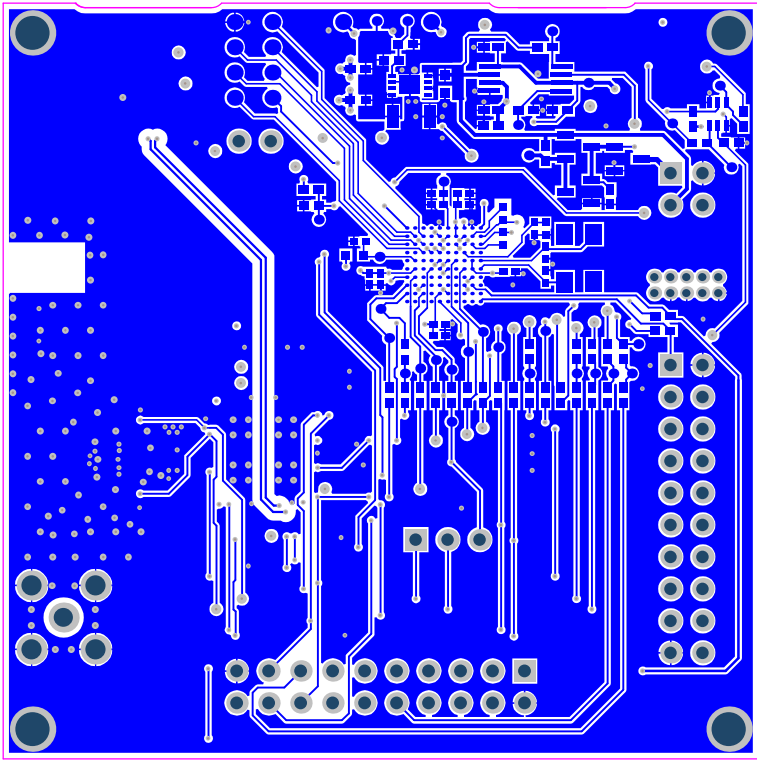












# Component list

Top Level Schematics

Source Data From:

SAMR21\_Xplained\_Pro.PrjPCB

Project:

SAMR21\_Xplained\_Pro.PrjPCB

Variant:

Default\_assembly



Report Date: 26.09.2013 10:43:52  
Print Date: 26.09.2013 10:43:49

Fitted	Designator	Quantity	Value	Manufacturer	MPN	Description
Fitted	A600	1	2450AT18D0100	Johanson Technology	2450AT18D0100	2.45 GHz Ceramic Antenna
Fitted	B600	1	2450BM15A0015E	Johanson Technology	2450BM15A0015E	Filtered Balun to match A166RF232/233 (35288)
Fitted	C100	1	10u	vishay	TR3A106K016C1700	SMD tantalum capacitor, ESR = 1.7, 3216-18 (EIA) 1206,
Fitted	C101	1	4.7uF	tdk	C1608X5R1A475K	Ceramic capacitor, SMD 0603, X5R, 10V, 10% (de31036)
Fitted	C102, C103, C303, C304, C307, C308, C311, C312, C314	9	100n	Kemet	C0402C104K4RACTU	Ceramic capacitor, SMD 0402, X7R, 16V, +/-10%
Fitted	C300, C305	2	10p			Ceramic capacitor, SMD 0402, NP0, 50V, +/-5%
Fitted	C301, C404, C410, C411, C412, C413	6	100n	Kemet	C0402C104K4RACTU	Ceramic capacitor, SMD 0402, X7R, 16V, +/-10%
Fitted	C306	1	10uF16V	Taiyo Yuden	EMK107BJ106MA-T	Ceramic capacitor, SMD 0603, X5R, 16V, 10uF ± 20% (High Density)
Fitted	C309, C310	2	8.2p			Ceramic capacitor, SMD 0402, NP0, 50V, +/-5%
Fitted	C400, C401	2	22p			Ceramic capacitor, SMD 0402, NP0, 50V, +/-5%
Fitted	C402	1	10p			Ceramic capacitor, SMD 0402, NP0, 50V, +/-5%
Fitted	C405, C409, C414, C415	4	2.2uF	Kemet	C0402C225MBPAC	Ceramic capacitor, SMD 0402, X5R, 6.3V, +/-20%
Fitted	C406, C407, C408	3	1 nF COG	Murata	GRM1555C1H102JA01D	Ceramic capacitor, SMD 0402, COG, 50V, +/-5%
Fitted	C600, C601, C602, C603, C604	5	22pF	Johanson Technology	250R05L220JV4T	Ceramic Capacitor, SMD 0201, 25V, NP0, 22pF
Fitted	C605, C606	2	22p			Ceramic capacitor, SMD 0402, NP0, 50V, +/-5%
Fitted	D300, D402	2	PRTRSV0U2X	Philips	PRTRSV0U2X	Double rail-to-rail USB ESD protection diode
Fitted	D301, D401	2	EL17-21UYCA2	Everlight	17-21UYCSS30-A3/TR8	LED, Yellow, Wave length=561nm, SMD 0805, ±70°
Fitted	D400	1	EL17-21SYGC	Everlight	EL17-21SYGC	LED, Green, Wave length=575nm, SMD 0805, ±70°
Fitted	E1, E2, E3, E4	4	SJ-5076	3M	SJ-5076	2.8mm adhesive feet,diam 8.0mm
Fitted	FXTUREE1	1	Xplained PRO MCU board Jupiter Test Fixture	ESCATEC	Xplained PRO MCU board Jupiter Test Fixture	Xplained PRO MCU board Jupiter Test Fixture
Fitted	FW1	1	EDBG secured firmw are	ATMEL		EDBG secured firmw are
Fitted	J100	1	P101-2*02RGF-139-ND		P101-2*02RGF-139-ND	Pin header, 2x2, Right Angle, 2.54mm, THT, Pin in Paste
Fitted	J101	1	Pin header 1x2 right angle	Pro-data International Corp	2213R-2G	1x2 pin header, right angle, 2.54 mm pitch, through-hole
Fitted	J200, J202	2	P101-2*10RGF-139-ND		P101-2*10RGF-139-ND	Pin header, 2x10, Right Angle, 2.54mm, THT, Pin in Paste
Fitted	J300, J400	2	10104111-0001LF	FCI	10104111-0001LF	Micro USB AB Connector
Fitted	J600	1	19-46-1-TGG	Multicomp	19-46-1-TGG	SMA PCB mounted connector 50Ohm (de19205)
Fitted	JS100	1	SN1-100-BK-G	SAMTEC	SN1-100-BK-G	Jumper cap for 2.54mm pinheader
Fitted	L300	1	BLM18PG471SN1	Murata	BLM18PG471SN1	SMD RF inductor 0603, Z=4700hm (@100MHz), Max R(dc)=0.65Ohm, Max current=1A
Fitted	L401, L402	2	BLM18PG471SN1	Murata	BLM18PG471SN1	SMD RF inductor 0603, Z=4700hm (@100MHz), Max R(dc)=0.65Ohm, Max current=1A
Fitted	LABEL1	1	Label PCBA with MAC64 and FCC ID	ACT Logimark AS	505462	Label for use on wireless PCBA that needs 64 bit MAC and FCC ID
Fitted	PCB1	1	SAMR21 Xplained Pro PCB documentation	ATMEL		SAMR21 Xplained Pro PCB documentation
Fitted	PCBADOCC1	1	A09-2127 PCB A Files	ATMEL		SAMR21 Xplained Pro PCB documentation
Fitted	Q100, Q101	2	IRLM6402PBF	International Rectifier	IRLM6402PBF	P-ch. MOSFET, -30V, -3.7A continuous RDS(ON)=0.05Ohm@VGS=4.5V, RDS(ON)=0.08Ohm@VGS=2.5V
Fitted	Q102	1	2N7002.215	NXP	2N7002.215	N-Channel MOSFET, 60V, 0.300A continuous, 1.2A Peak, RDS(ON) = 3.8Ohm@VGS=4.5V, VGS(th)=-2.5V
Fitted	Q400	1	2N7002DW	Fairchild	2N7002DW	Dual N-Channel MOSFET, 60V, 115mA cont.RDS(ON) < 7.5 Ohm @50mA@5V, SOT-363
Fitted	R100	1	18k			Thick film resistor, SMD 0402, 1/16W, 1%
Fitted	R101, R104, R105, R410, R413	5	1M			Thick film resistor, SMD 0402, 1/16W, 1%
Fitted	R102	1	30k			Thick film resistor, SMD 0402, 1/16W, 1%
Fitted	R103, R107, R300	3	100k			Thick film resistor, SMD 0402, 1/16W, 1%
Fitted	R106	1	390R			Thick film resistor, SMD 0402, 1/16W, 1%
Fitted	R108, R301, R306, R307, R308, R309, R310, R311, R312, R313, R314, R315, R316, R317, R318, R319, R320, R321, R322, R323, R324, R325, R329, R425	24	0R			Thick film resistor, SMD 0402, 1/16W, 1%, RES 0.0 OHM 1/16W 0402 SMD, RES 0.0 OHM 1/16W 0402 SMD, RES 0.0 OHM 1/16W 0402 SMD, RES 0.0 OHM 1/16W 0402 SMD, RES 0.0 OHM 1/16W 0402 SMD, RES 0.0 OHM 1/16W 0402 SMD, RES 0.0 OHM 1/16W 0402 SMD, RES 0.0 OHM 1/16W 0402 SMD, RES 0.0 OHM 1/16W 0402 SMD, RES 0.0 OHM 1/16W 0402 SMD, RES 0.0 OHM 1/16W 0402 SMD, RES 0.0 OHM 1/16W 0402 SMD, RES 0.0 OHM 1/16W 0402 SMD, RES 0.0 OHM 1/16W 0402 SMD, RES 0.0 OHM 1/16W 0402 SMD, RES 0.0 OHM 1/16W 0402 SMD, RES 0.0 OHM 1/16W 0402 SMD, Thick film resistor, SMD 0402, 1/16W, 1%
Fitted	R109, R110, R328, R330	4	47k			Thick film resistor, SMD 0402, 1/16W, 1%
Fitted	R302, R304, R421, R422	4	39R			Thick film resistor, SMD 0402, 1/16W, 1%
Fitted	R303, R411, R412, R414, R416, R417, R418, R419, R420	9	330R			Thick film resistor, SMD 0402, 1/16W, 1%
Fitted	R326, R327	2	4.7k			Thick film resistor, SMD 0402, 1/16W, 1%
Fitted	R401, R409	2	1k			Thick film resistor, SMD 0402, 1/16W, 1%
Fitted	R423	1	6.81k			Thick film resistor, SMD 0402, 1/16W, 1%
Fitted	R600	1	0R	ROHM	MCR006Y2P0000	Thick film resistor, SMD 0201, 1/20W, 5%
Fitted	SW300, SW301	2	SKRAAKED10	ALPS	SKRAAKED10	6.2x6.2 mm SMD tact sw itch, same as A08-0091 but less force is needed
Fitted	TEST1	1	SAMR21 Xplained Pro test	ATMEL		Fixture test for SAMR21 Xplained Pro
Fitted	TESTIDOC1	1	SAMR21 Xplained Pro test Instructions	ATMEL		SAMR21 Xplained Pro test Instructions
Fitted	U100	1	SPX3819R2-L/TR	Exar	SPX3819R2-L/TR	500mA LDO, ADJ, low noise, 8-DPN package
Fitted	U101	1	TPS2113PWR	Texas Instruments	TPS2113PWR	Autoswitching 2:1 Power Mux
Fitted	U300	1	SAMR21G18A	ATMEL	SAMR21G18A-MJT	Atmel 32-bit Cortex M0 MCU with RF233 SiP
Fitted	U400	1	AT32UC3A4256J-C1UR	ATMEL	AT32UC3A4256J-C1UR	AVR 32-bit RISC MCU
Fitted	U600	1	AS222-92LF	SKYWORKS SOLUTIONS	AS222-92LF	PH-EMT SPDT Analog SWITCH 0.1-3 GHz
Fitted	XC300	1	16.0MHz	Epson Toyocom	TSX-3225 16.0000MF092-AC3	16MHz wXtal, 3.2 x 2.5 mm SMD, CL=9pF, 15PFM, ESR=80ohm(Max.
Fitted	XC301	1	32.768kHz +/-20PPM 7pF SMD	Micro Crystal	MS1V-T1K 32.768kHz 7pF +/-20PPM 1A	32k768 crystal, +/-20ppm, CL=7pF, max ESR 60kOhm, SMD
Fitted	XC400	1	12.0MHz	Fox Electronics	FQ5032B-12.0MHz	Fox FQ5032B 12.0MHz SMD crystal 738B-12
Not Fitted	C302, C403	0	4.7n			Ceramic capacitor, SMD 0402, X7R, 25V, +/-10%
Not Fitted	J303	0	PIN HEADER 2x5	Garry	STL21-0730 G TT-10U	2x5 pin header, 1.27mm pitch, THM
Not Fitted	J304	0	HMTSW-103-23-F-S-237			1x3 pin header, 2.54mm pitch, Pin-in-Paste THM, 1mm hole
Not Fitted	R305, R424	0	1M	KOA	RK73H1ETTP1004F	Thick film resistor, SMD 0402, 1/16W, 1%

Approved	140

Notes