
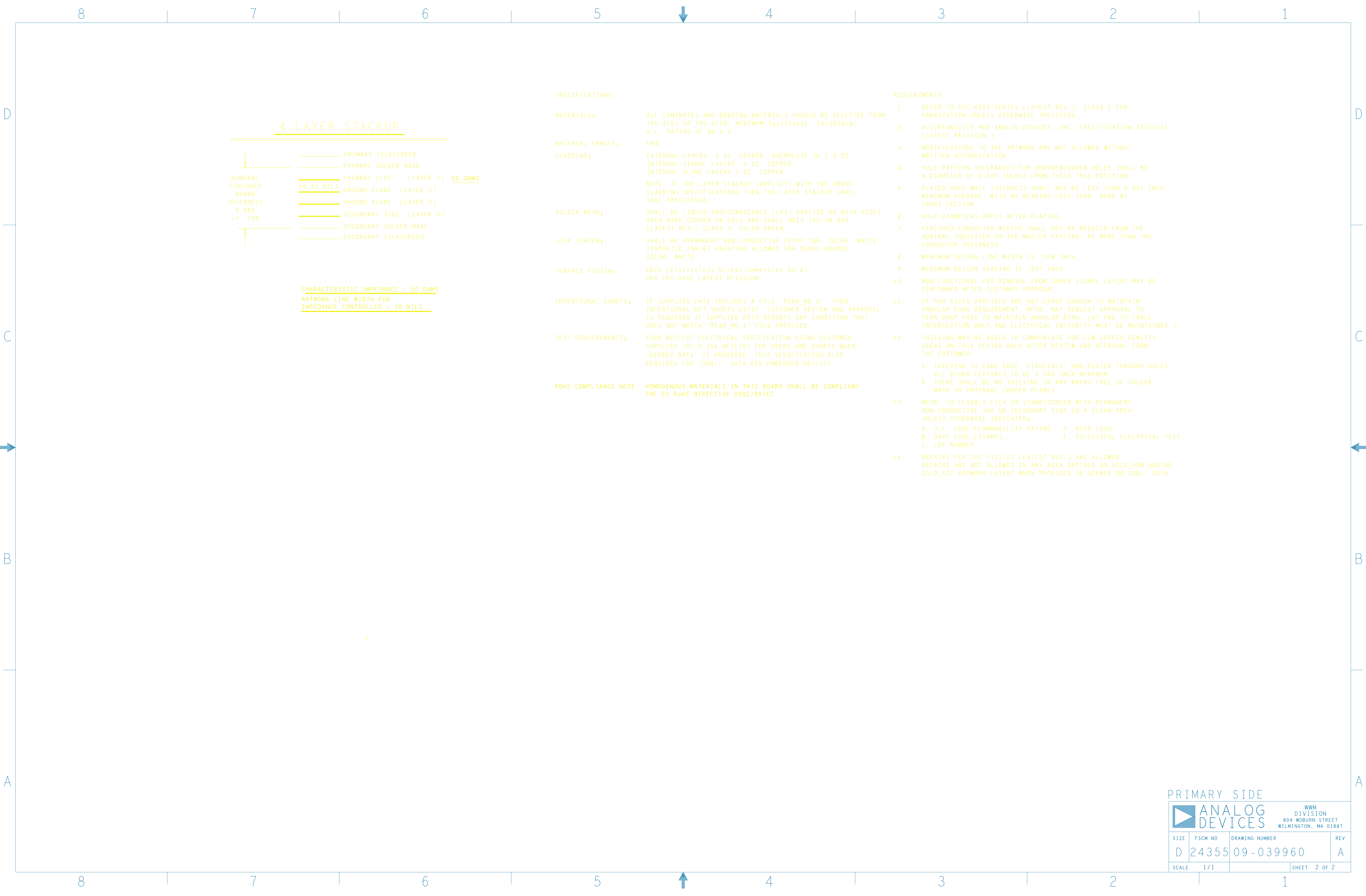


REVISIONS			
REV	DESCRIPTION	DATE	APPROVED
A	INITIAL RELEASE	09DEC14	G.ARINUELO

UNLESS OTHERWISE SPECIFIED DIMENSIONS ARE IN INCHES		APPROVAL		DATE		 ANALOG DEVICES		WWM DIVISION 804 WOBURN STREET WILMINGTON, MA 01887					
TOLERANCES		TEMPLATE ENGINEER G. AGUIRRI		NOV12		TITLE  FABRICATION  ADF7242Z EVAL BOARD							
DECIMALS	FRACTIONS	HARDWARE TESTER R. MACDONALD		NOV12									
.XX - .001		HARDWARE TESTER J. KEANE		NOV12									
.XXX - .005													
.XXXX - .0050	.1/32 - .1												
MATERIAL		TEST ENGINEER N/A		N/A									
		COMPONENT ENGINEER G. CELEDONIO		NOV12									
		TEST PROCESS N/A		N/A									
		HARDWARE RELEASE R. AMARILLE		NOV12									
FINISH		DESIGNER gld		09DEC14		SIZE		FSCM NO		DRAWING NUMBER		REV	
		PTD ENGINEER G. ARNUELO		09DEC14		D		24355		09 - 039960		A	
		CHECKER G. ARNUELO		09DEC14									
DO NOT SCALE DWG						SCALE		1/1				SHEET 1 of 2	



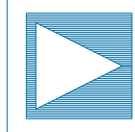
SPECIFICATIONS:

MATERIALS;	ALL LAMINATES AND BONDING MATERIALS SHOULD BE SELECTED FROM IPC-4101 OR IPC-4103, MINIMUM Tg>170degC, Td>300degC, U.L. RATING OF 94 V-0
MATERIAL FAMILY;	FR4
CLADDING;	EXTERNAL LAYERS .5 OZ. COPPER, OVERPLATE TO 1.5 OZ. INTERNAL SIGNAL LAYERS .5 OZ. COPPER. INTERNAL PLANE LAYERS 1 OZ. COPPER.  NOTE: IF THE LAYER STACKUP CONFLICTS WITH THE ABOVE CLADDING SPECIFICATIONS THEN THE LAYER STACKUP SHALL TAKE PRECEDENCE.
SOLDER MASK;	SHALL BE LIQUID PHOTOIMAGEABLE (LPI) APPLIED ON BOTH SIDES OVER BARE COPPER OR GOLD AND SHALL MEET IPC-SM-840 (LATEST REV.) CLASS 3, COLOR GREEN.
SILK SCREEN;	SHALL BE PERMANENT NON-CONDUCTIVE EPOXY INK, COLOR: WHITE SYNTHETIC INKJET PRINTING ALLOWED FOR DENSE BOARDS, COLOR: WHITE
SURFACE FINISH;	ENIG (Electroless Nickel/Immersion Gold) PER IPC-4552 LATEST REVISION
INTENTIONAL SHORTS;	IF SUPPLIED DATA INCLUDES A FILE "READ_ME.2", THEN INTENTIONAL NET SHORTS EXIST. CUSTOMER REVIEW AND APPROVAL IS REQUIRED IF SUPPLIED DATA REPORTS ANY CONDITION THAT DOES NOT MATCH "READ_ME.2" FILE PROVIDED.
TEST REQUIREMENTS;	100% NETLIST ELECTRICAL VERIFICATION USING CUSTOMER SUPPLIED IPC-D-356 NETLIST FOR OPENS AND SHORTS WHEN "GERBER DATA" IS PROVIDED. THIS VERIFICATION ALSO REQUIRED FOR "ODB++" DATA PER EMBEDDED NETLIST.
ROHS COMPLIANCE NOTE:	HOMOGENOUS MATERIALS IN THIS BOARD SHALL BE COMPLIANT THE EU RoHS DIRECTIVE 2002/95/EC

REQUIREMENTS:

- REFER TO IPC-6010 SERIES (LATEST REV.), CLASS 2 FOR FABRICATION UNLESS OTHERWISE SPECIFIED.
- ACCEPTABILITY PER ANALOG DEVICES, INC. SPECIFICATION TST00115, (LATEST REVISION.)
- MODIFICATIONS TO THE ARTWORK ARE NOT ALLOWED WITHOUT WRITTEN AUTHORIZATION.
- HOLE PATTERN TOLERANCES FOR UNDIMENSIONED HOLES SHALL BE A DIAMETER OF 0.005 INCHES FROM THEIR TRUE POSITION.
- PLATED HOLE WALL THICKNESS SHALL NOT BE LESS THAN 0.001 INCH MINIMUM AVERAGE, WITH NO READING LESS THAN .0008 BY CROSS SECTION.
- HOLE DIAMETERS APPLY AFTER PLATING.
- FINISHED CONDUCTOR WIDTHS SHALL NOT BE REDUCED FROM THE NOMINAL INDICATED ON THE MASTER PATTERN, BY MORE THAN THE CONDUCTOR THICKNESS.
- MINIMUM DESIGN LINE WIDTH IS .008 INCH.
- MINIMUM DESIGN SPACING IS .007 INCH.
- NON-FUNCTIONAL PAD REMOVAL FROM INNER SIGNAL LAYERS MAY BE PERFORMED AFTER CUSTOMER APPROVAL.
- IF PAD SIZES PROVIDED ARE NOT LARGE ENOUGH TO MAINTAIN ANNULAR RING REQUIREMENT, MFR. MAY REQUEST APPROVAL TO TEAR DROP PADS TO MAINTAIN ANNULAR RING. (AT PAD TO TRACE INTERSECTION ONLY AND ELECTRICAL INTEGRITY MUST BE MAINTAINED.)
- THIEVING MAY BE ADDED TO COMPENSATE FOR LOW COPPER DENSITY AREAS ON THIS DESIGN ONLY AFTER REVIEW AND APPROVAL FROM THE CUSTOMER:  
A. THIEVING TO CARD EDGE, FIDUCIALS, NON-PLATED THROUGH HOLES, ALL OTHER FEATURES TO BE 0.200 INCH MINIMUM.  
B. THERE SHALL BE NO THIEVING IN ANY AREAS FREE OF SOLDER MASK OR INTERNAL COPPER PLANES.
- MFR. TO LEGIBLY ETCH OR STAMP/SCREEN WITH PERMANENT NON-CONDUCTIVE INK ON SECONDARY SIDE IN A CLEAR AREA UNLESS OTHERWISE INDICATED;  
A. U.L. CODE-FLAMMABILITY RATING      D. MFR LOGO  
B. DATE CODE (STAMP).                      E. SUCCESSFUL ELECTRICAL TEST.  
C. LOT NUMBER
- REPAIRS PER IPC-7711/21 (LATEST REV.) ARE ALLOWED. REPAIRS ARE NOT ALLOWED IN ANY AREA DEFINED ON GOLD\_PRM AND/OR GOLD\_SEC ARTWORK LAYERS WHEN PROVIDED IN GERBER OR ODB++ DATA.

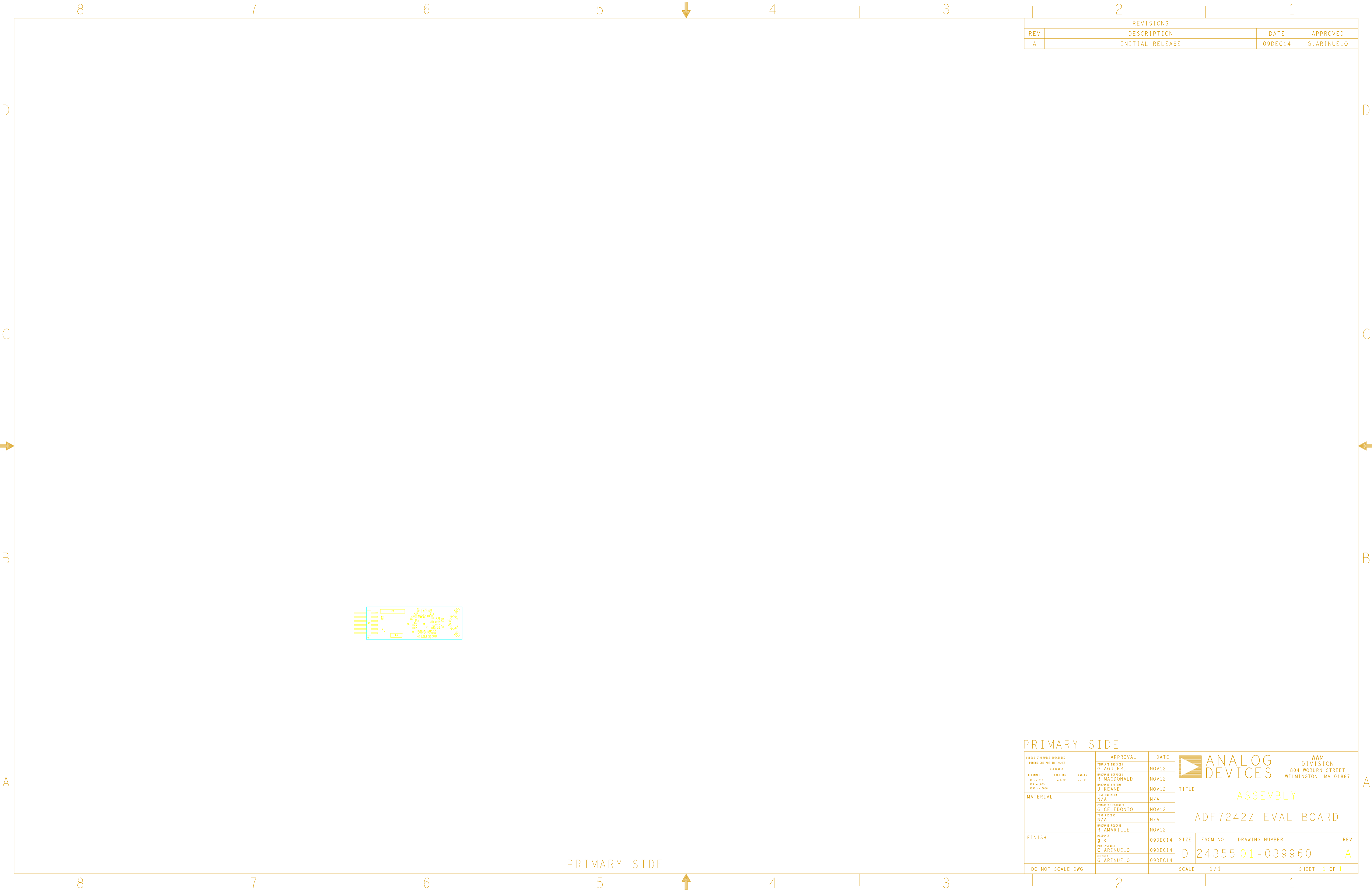
PRIMARY SIDE



**ANALOG  
DEVICES**

WWM  
DIVISION  
804 WOBURN STREET  
WILMINGTON, MA 01887

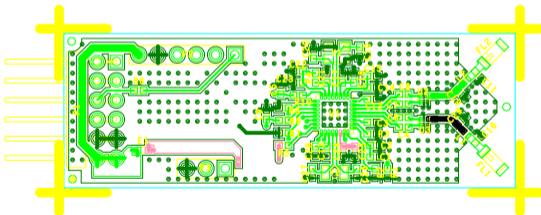
SIZE	FSCM NO	DRAWING NUMBER	REV
D	24355	09-039960	A
SCALE	1/1	SHEET 2 OF 2	



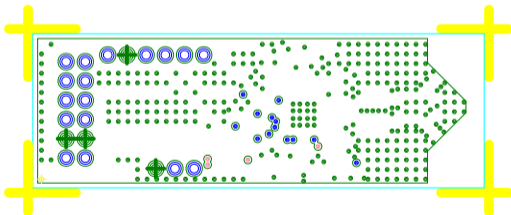
REVISIONS			
REV	DESCRIPTION	DATE	APPROVED
A	INITIAL RELEASE	09DEC14	G.ARINUELO

UNLESS OTHERWISE SPECIFIED DIMENSIONS ARE IN INCHES			APPROVAL		DATE	<div><div></div><div>ANALOG DEVICES</div><div>WWM DIVISION 804 WOBURN STREET WILMINGTON, MA 01887</div></div>			
TOLERANCES			TEMPLATE ENGINEER G. AGUIRRI		NOV12				
DECIMALS	FRACTIONS	ANGLES	HARDWARE SERVICES R. MACDONALD		NOV12	TITLE ASSEMBLY ADF7242Z EVAL BOARD			
.01 - .010	- 1/32	-- 2	HARDWARE SERVICES J. KEANE		NOV12				
.001 - .005			TEST ENGINEER N/A		N/A				
.005 - .0050			COMPONENT ENGINEER G. CELEDONIO		NOV12	SIZE    FSCM NO    DRAWING NUMBER    REV			
			TEST PROCESS N/A		N/A				
			HARDWARE RELEASE R. AMARILLE		NOV12				
MATERIAL						D    24355    01-039960    A			
FINISH			DESIGNER g i o		09DEC14				
			P3D ENGINEER G. ARINUELO		09DEC14				
			CHECKED G. ARINUELO		09DEC14				
DO NOT SCALE DWG					SCALE    1/1	SHEET    1    OF    1			

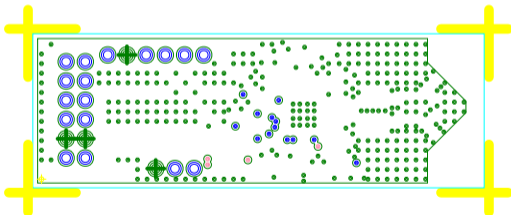
L1 PRIMARY  
08-039960-01  
REV A



L2 GND  
08-039960-07  
REV A



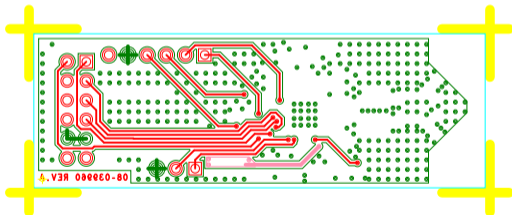
L3 GND  
08-039960-08  
REV A



L4 SECONDARY

08-039960-02

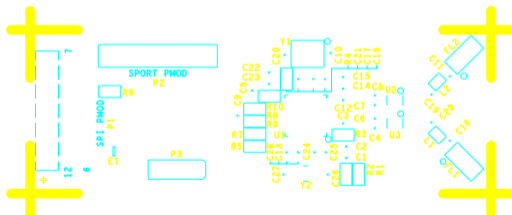
REV A



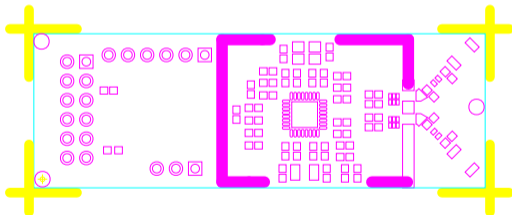
## SILKSCREEN PRIMARY

08-039960-03

REV A



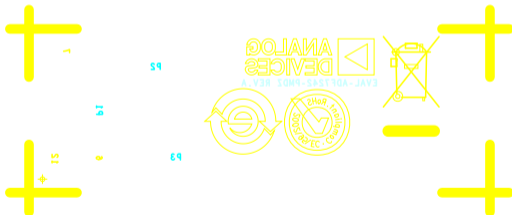
SOLDERMASK PRIMARY  
08-039960-04  
REV A



SILKSCREEN SECONDARY

08-039960-05

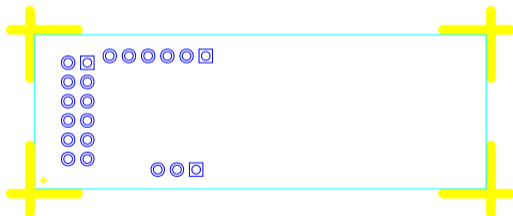
REV A



SOLDERMASK SECONDARY

08-039960-06

REV A



PASTEMASK PRIMARY

08-039960-09

REV A

